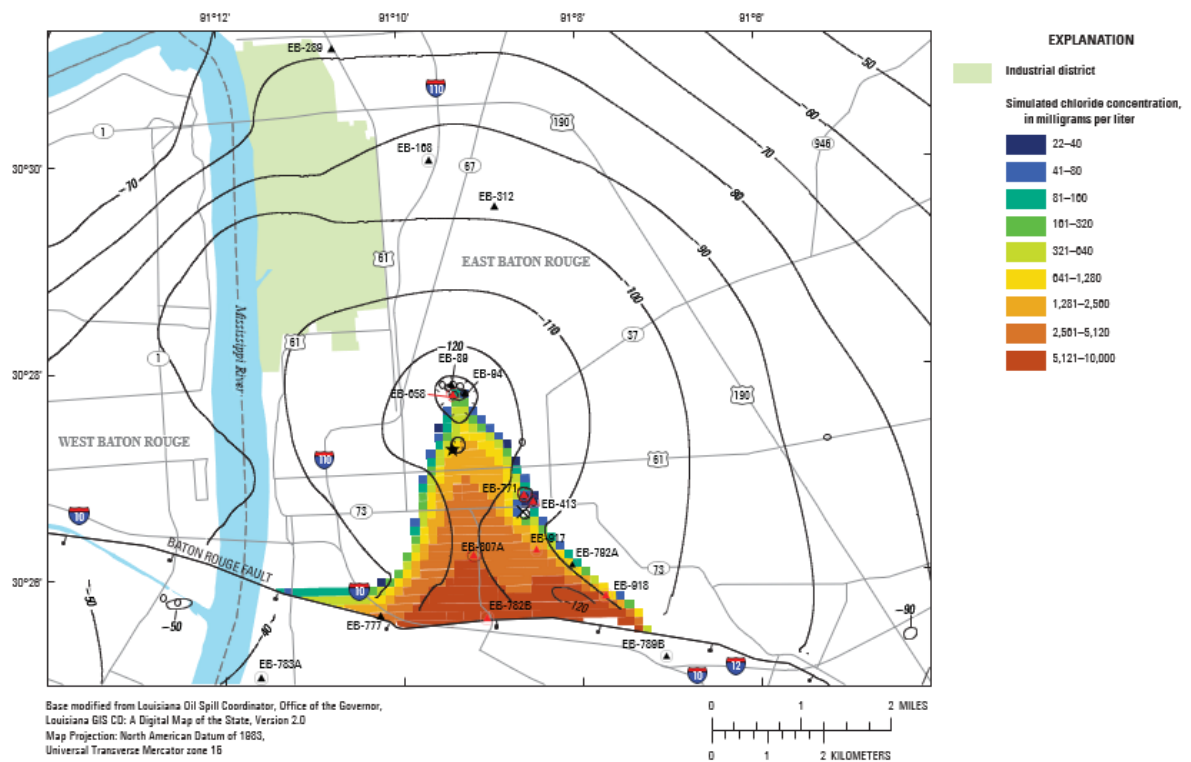
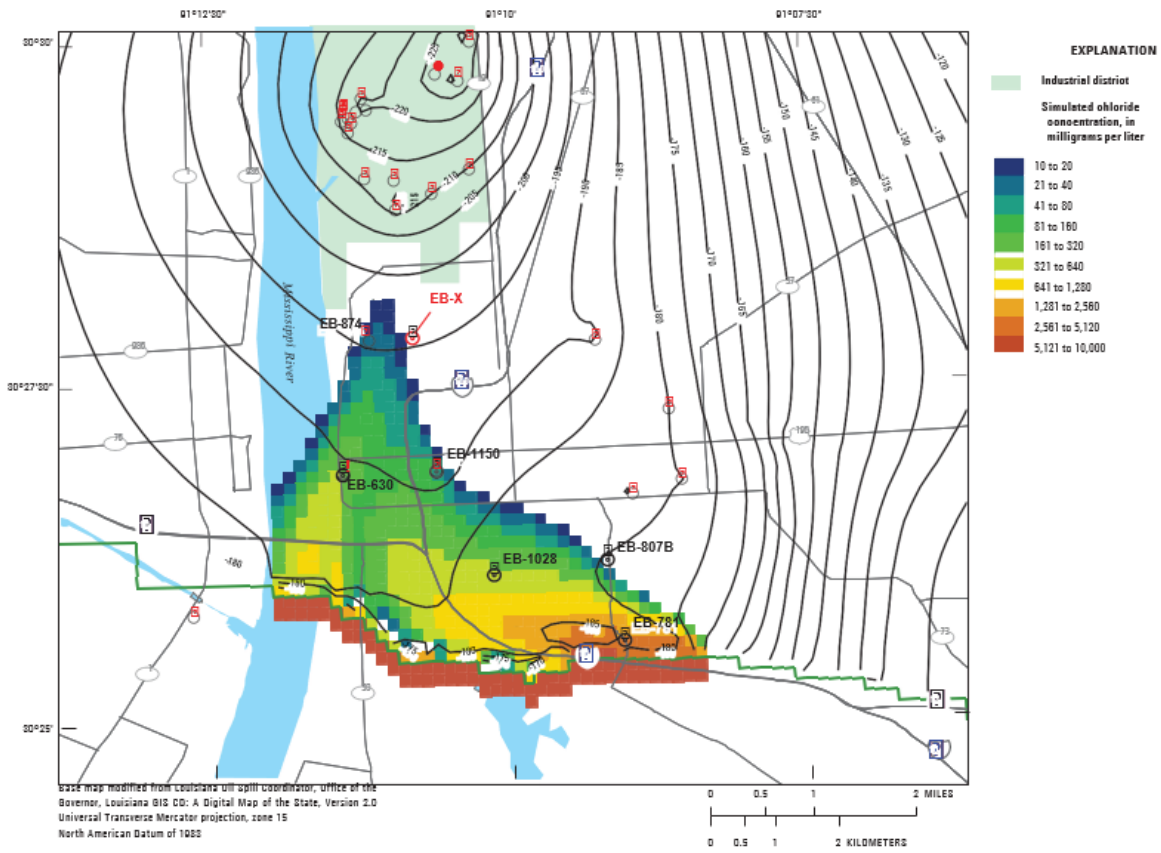


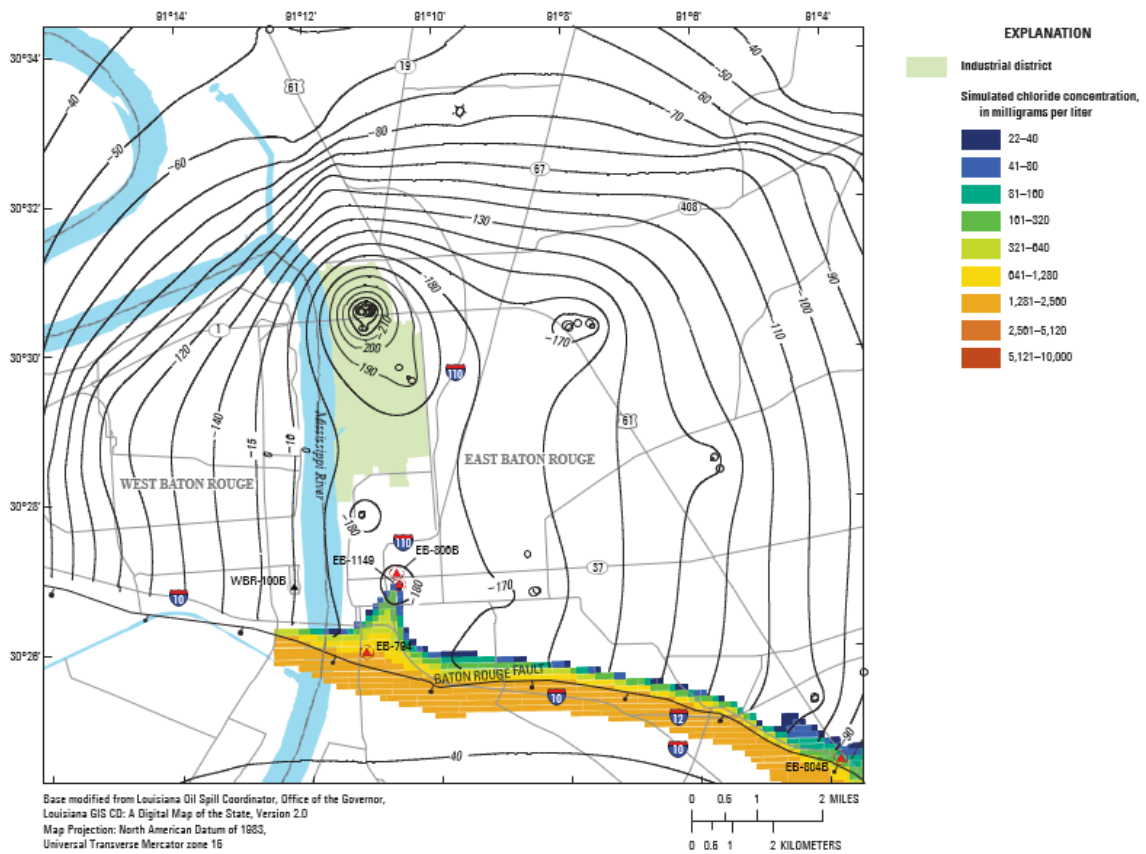
Simulated 2012 water levels and chloride concentrations in the "1,200-foot" sand of the Baton Rouge area.



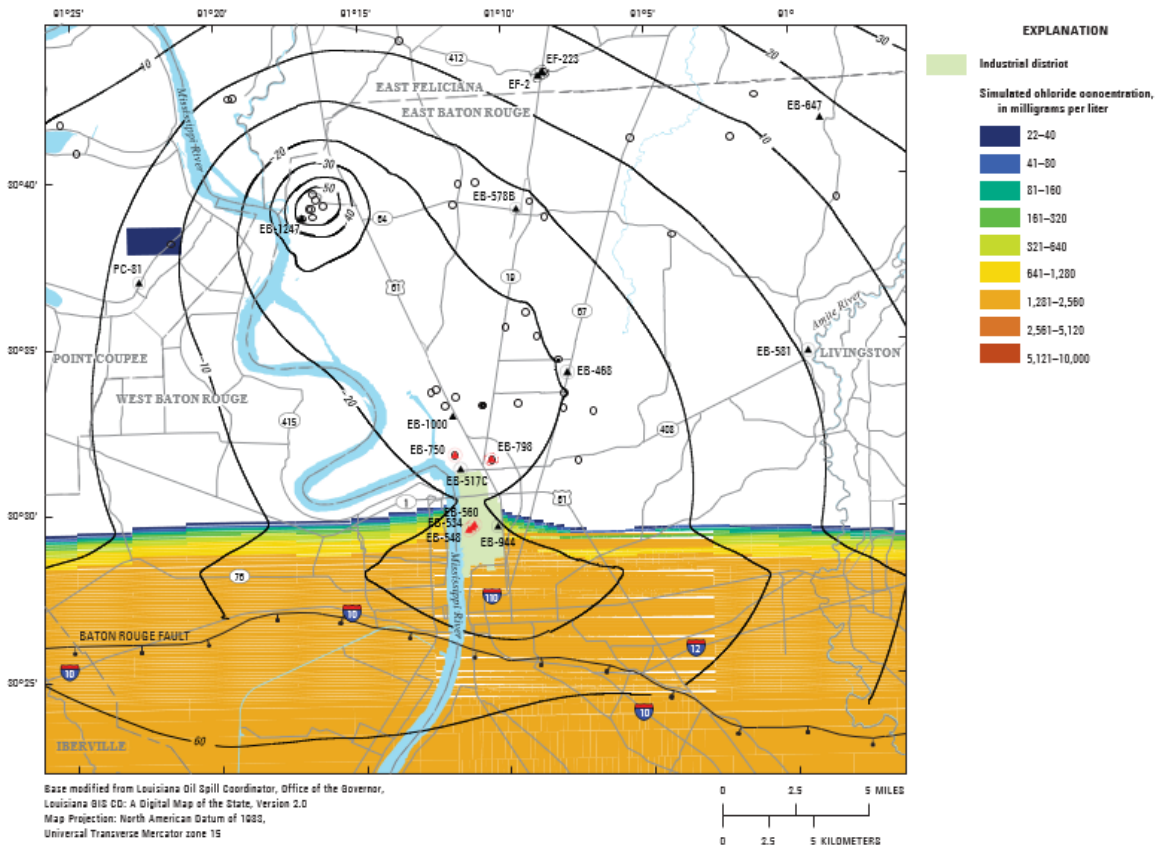
Simulated 2016 water levels and chloride concentrations in the "1,500-foot" sand of the Baton Rouge area.



Simulated 2012 water levels and chloride concentrations at the base of the "2,000-foot" sand of the Baton Rouge area .



Simulated 2016 water levels and chloride concentrations in the "2,400-foot" sand of the Baton Rouge area.



Simulated 2016 water levels and chloride concentrations in the "2,800-foot" sand of the Baton Rouge area.